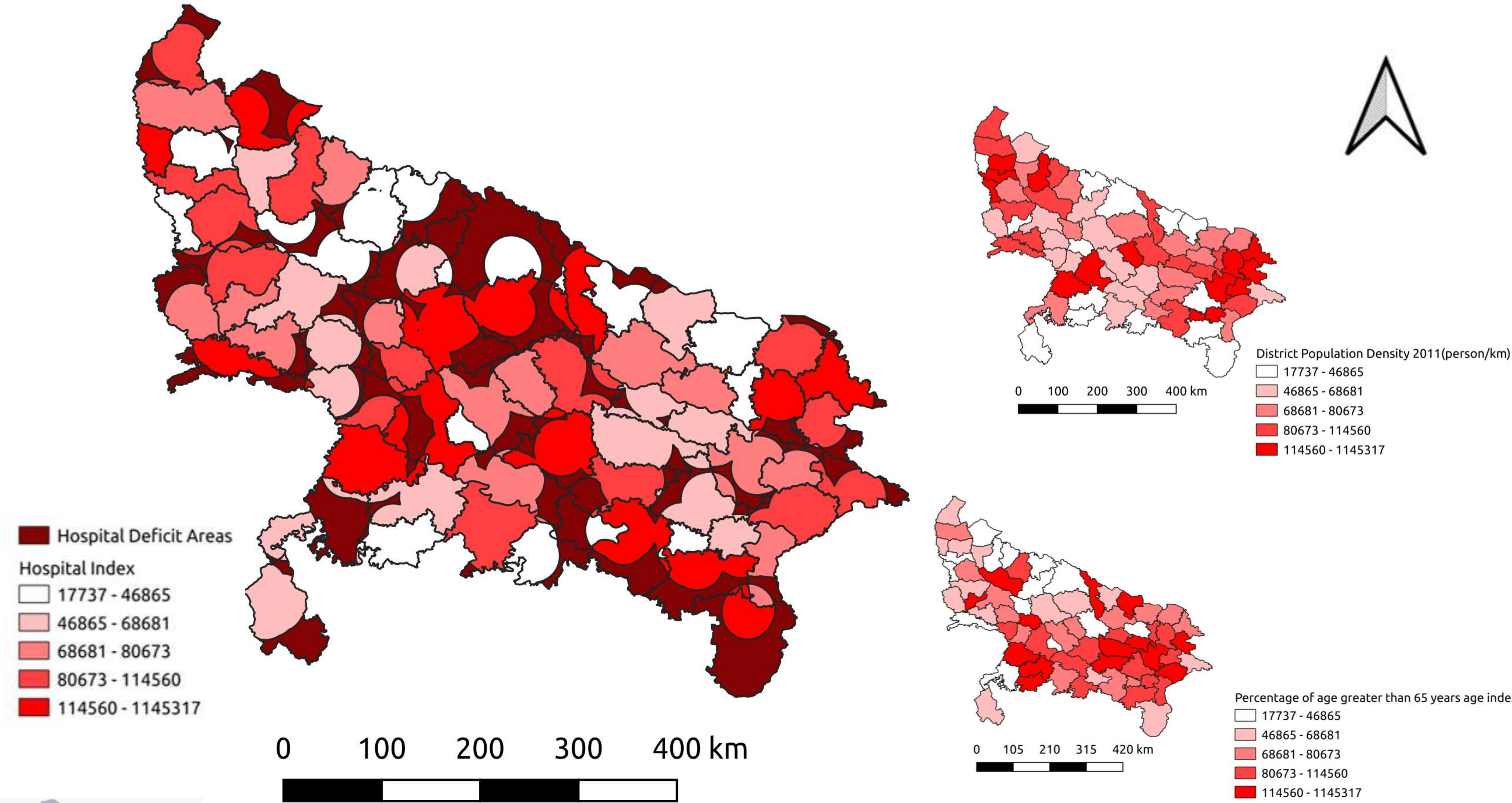


Title: Healthcare Infrastructure Gap Analysis At District Level, Uttar Pradesh




Introduction:

The latitude and longitude of Uttar Pradesh are 26.8467°N and 80.9462°E. Being the most populous state, Uttar Pradesh also has the greatest number of districts i.e., 75. The majority of the state's population live in rural areas where medical facilities are either not available or not up to the mark. The population density of the state is 828 persons per square kilometer.

Application:

This map helps us to analysis and compare the population density with the number of hospitals in an area which in turn helps in planning of construction of hospitals. It also informs us about the areas where hospitals are not at all available or the number of hospitals available are very less.

	Team Name: APD_IITBHU_2
	Topic: Healthcare Infrastructure Map
	Team member/lead: Hemank Vats (Lead) Anju Priyanshu Prasad Yazura Shankhdhar
	Organization: IIT (BHU) Varanasi
Contact/email: hemankvats25@gmail.com	