



A REPORT  
ON  
**“TUTORIAL OUTPUTS”**

SUBMITTED BY  
Srushti Kandoi

**Bachelors of planning – II semester: IV**

**Department of Planning  
Faculty of Architecture & Planning  
Shantabai Manubhai Patel School of Studies and Research in Architecture and Interior Design  
New Vallabh Vidyanagar Campus, Anand - 388121, Gujarat, India**

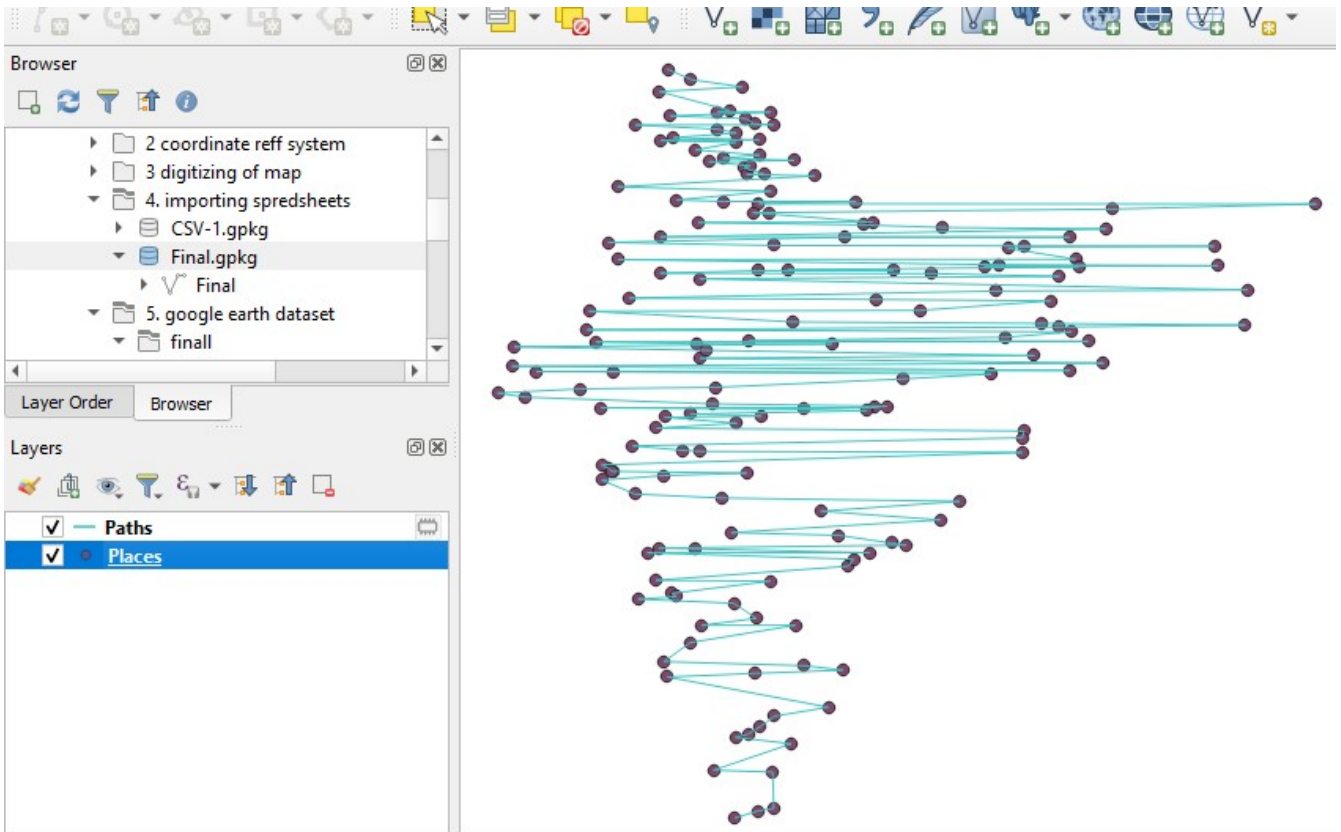
Principal: +91-98258-05369 | [principal@smaid.edu.in](mailto:principal@smaid.edu.in) | Telephone: +91-2692-238600 | [www.smaid.edu.in](http://www.smaid.edu.in)

## **Academic Year 2021-2022**

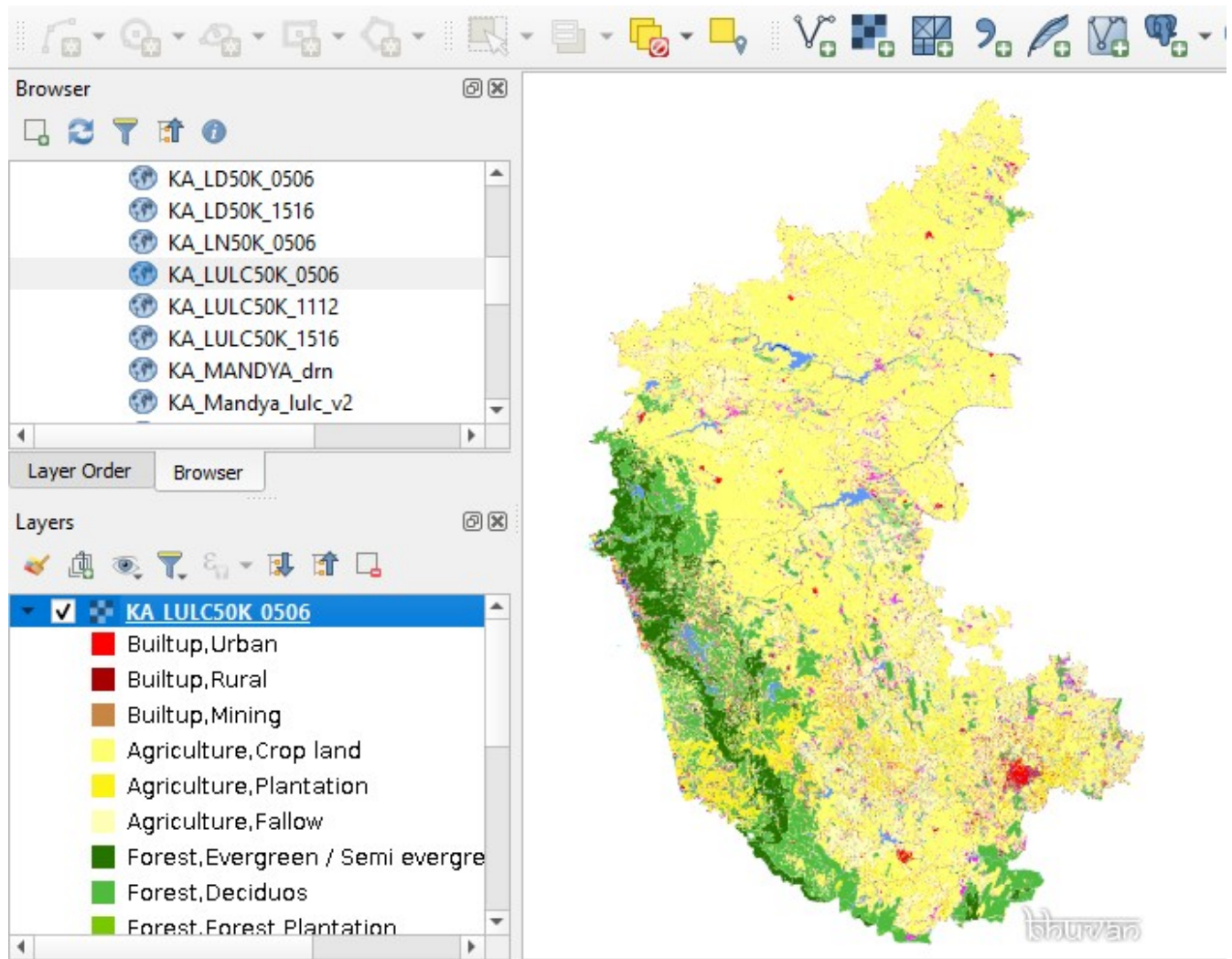
# DIGITIZING MAP DATA

The image displays a GIS software interface with a map of Bangalore. The interface includes a 'Browser' window on the left showing a file tree with folders like 'contour lake', 'gis', and 'GIS workshop', and files like 'Digitizing-Map-Data', 'Code-files/Banga', 'download.zip', and 'spoken/includes/'. Below the browser are 'Layer Order' and 'Browser' tabs. The 'Layers' panel on the left shows a list of layers: 'ass 1' (checked), 'as 1' (checked), and 'Bangalore' (checked). Under 'Bangalore', there are three sub-layers: 'Band 1 (Red)', 'Band 2 (Green)', and 'Band 3 (Blue)'. The map on the right shows the 'Bangalore' layer with a legend. The legend includes: 'Industrial Estate' (star symbol), 'IT Establishment' (square symbol), 'Major Roads' (line symbol), 'Corporation Area' (yellow square), and 'Greater Bangalore' (purple square). The map also features a north arrow and a scale bar in kilometers (0, 4, 8, 16, 24, 32).

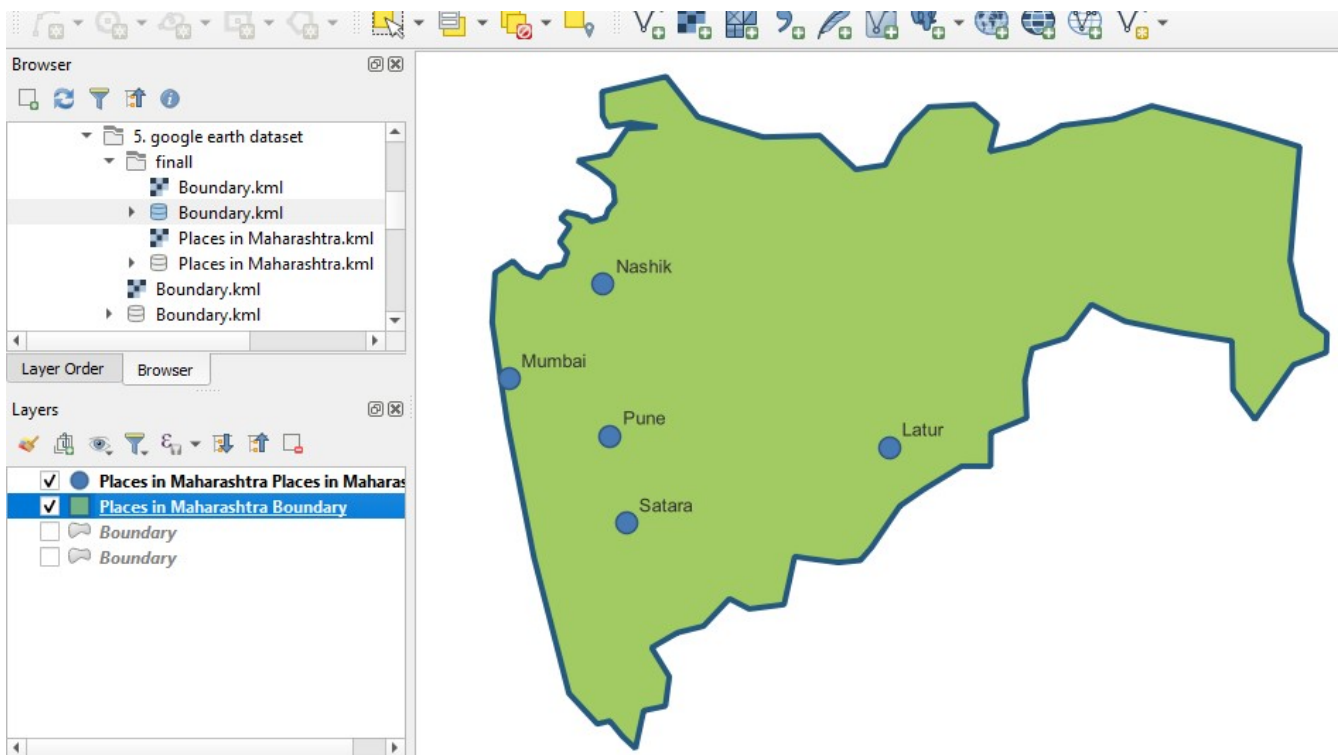
## IMPORTING SPREADSHEETS & WEB MAP SERVICES



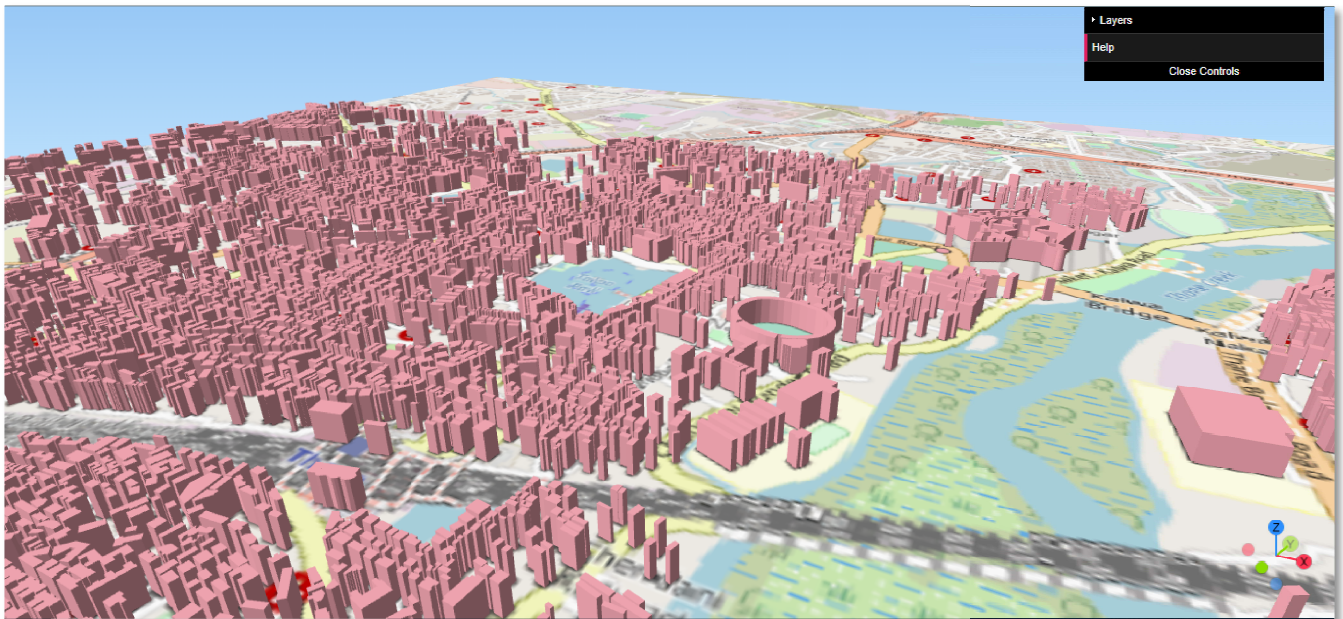
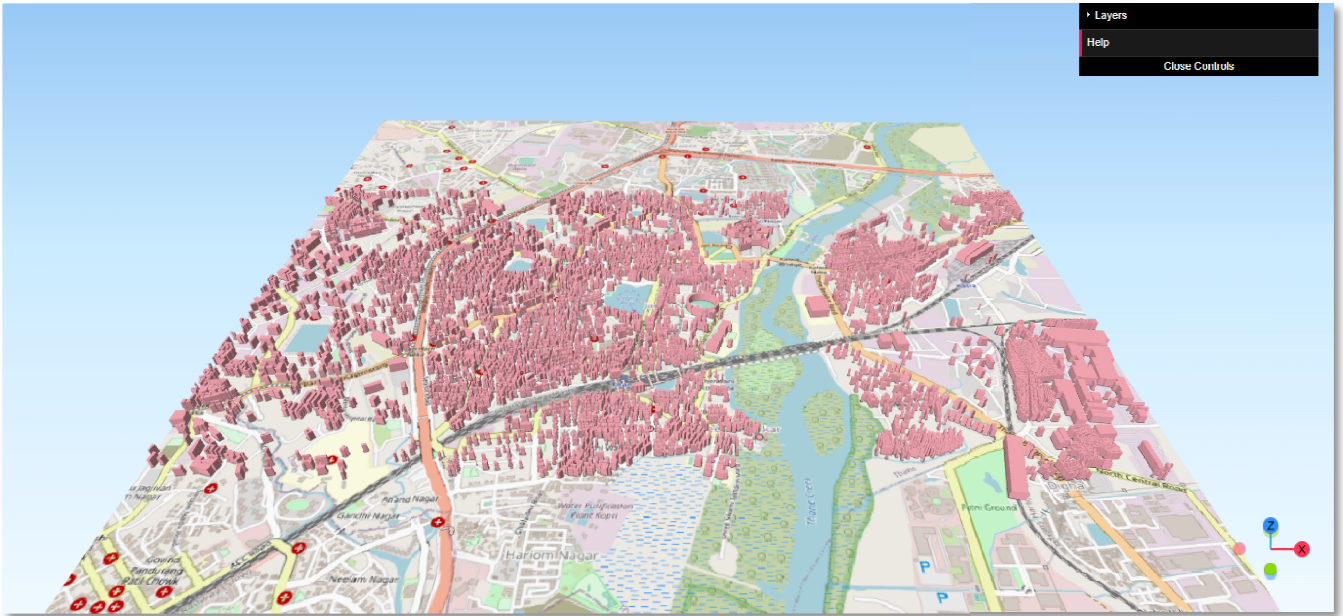
## WEB MAP SERVICES



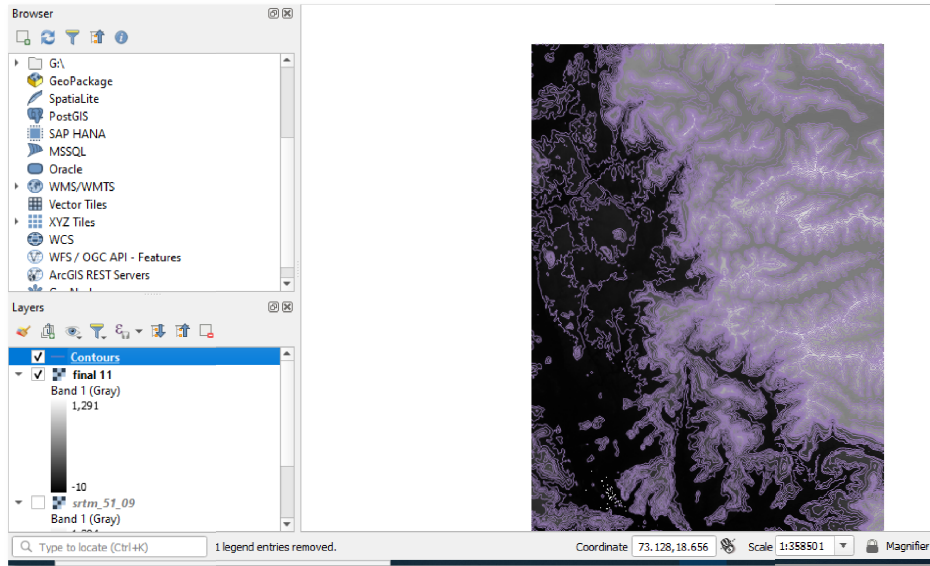
## VECTOR LAYER AS GOOGLE EARTH PRO DATASETS



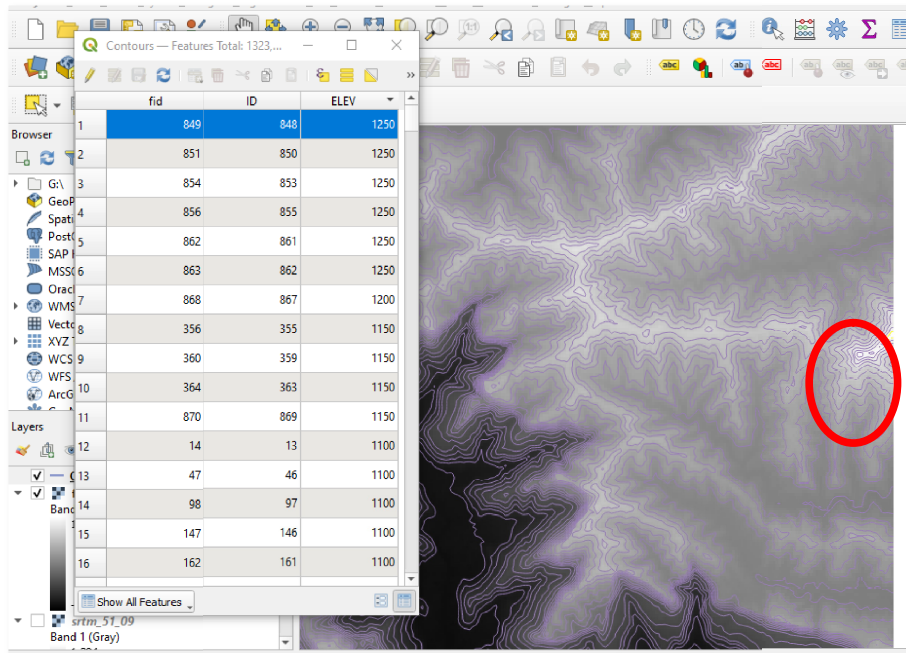
# PLUGINS



# CONTOUR LINES

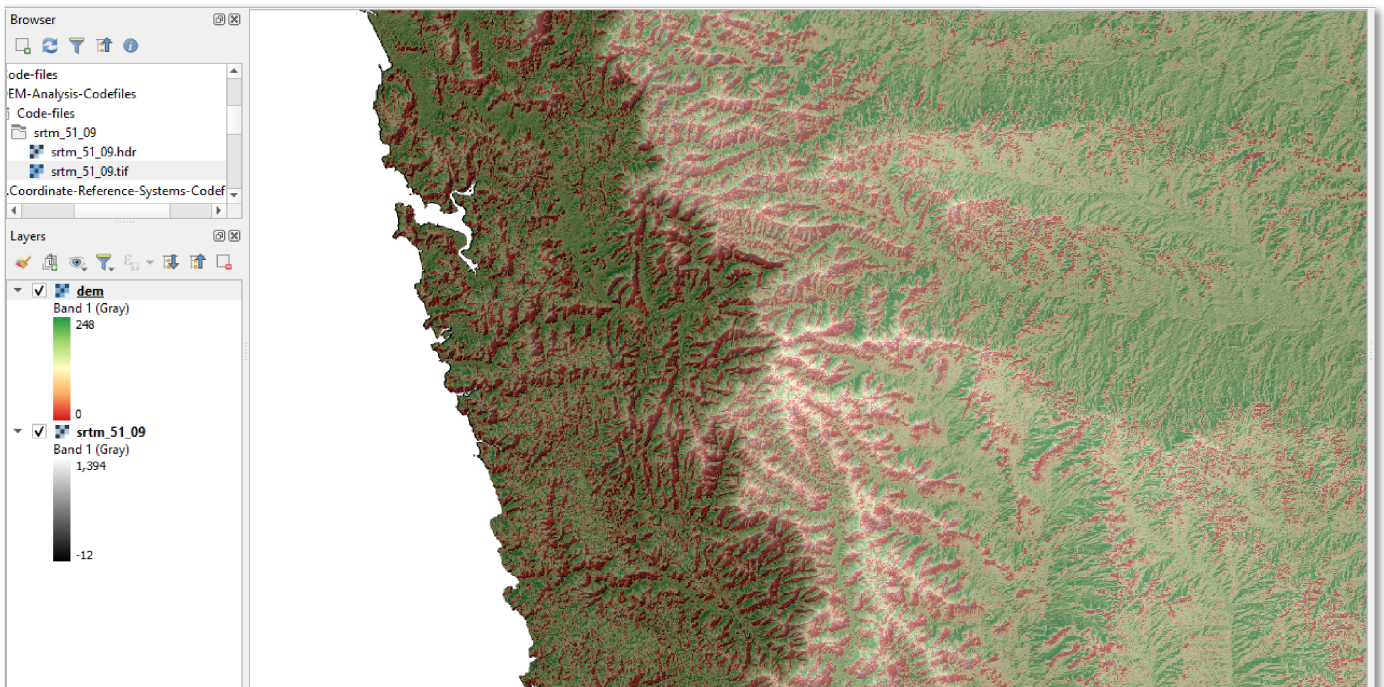
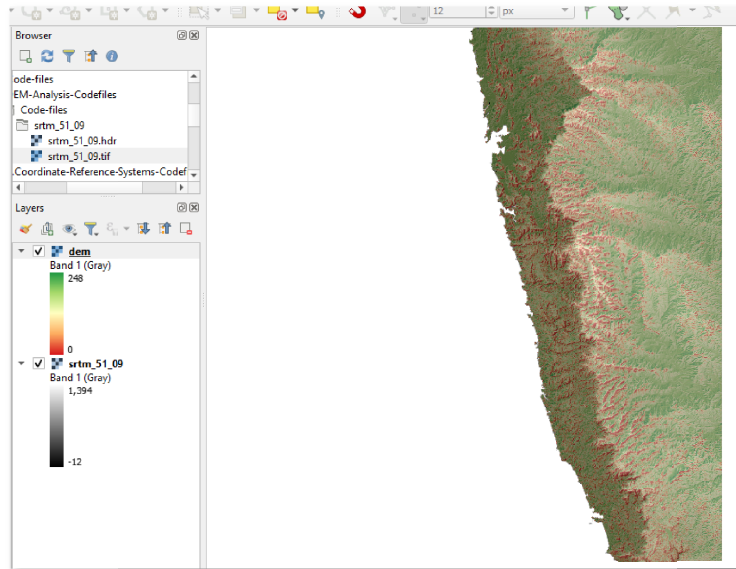


# HIGHEST CONTOUR LINES

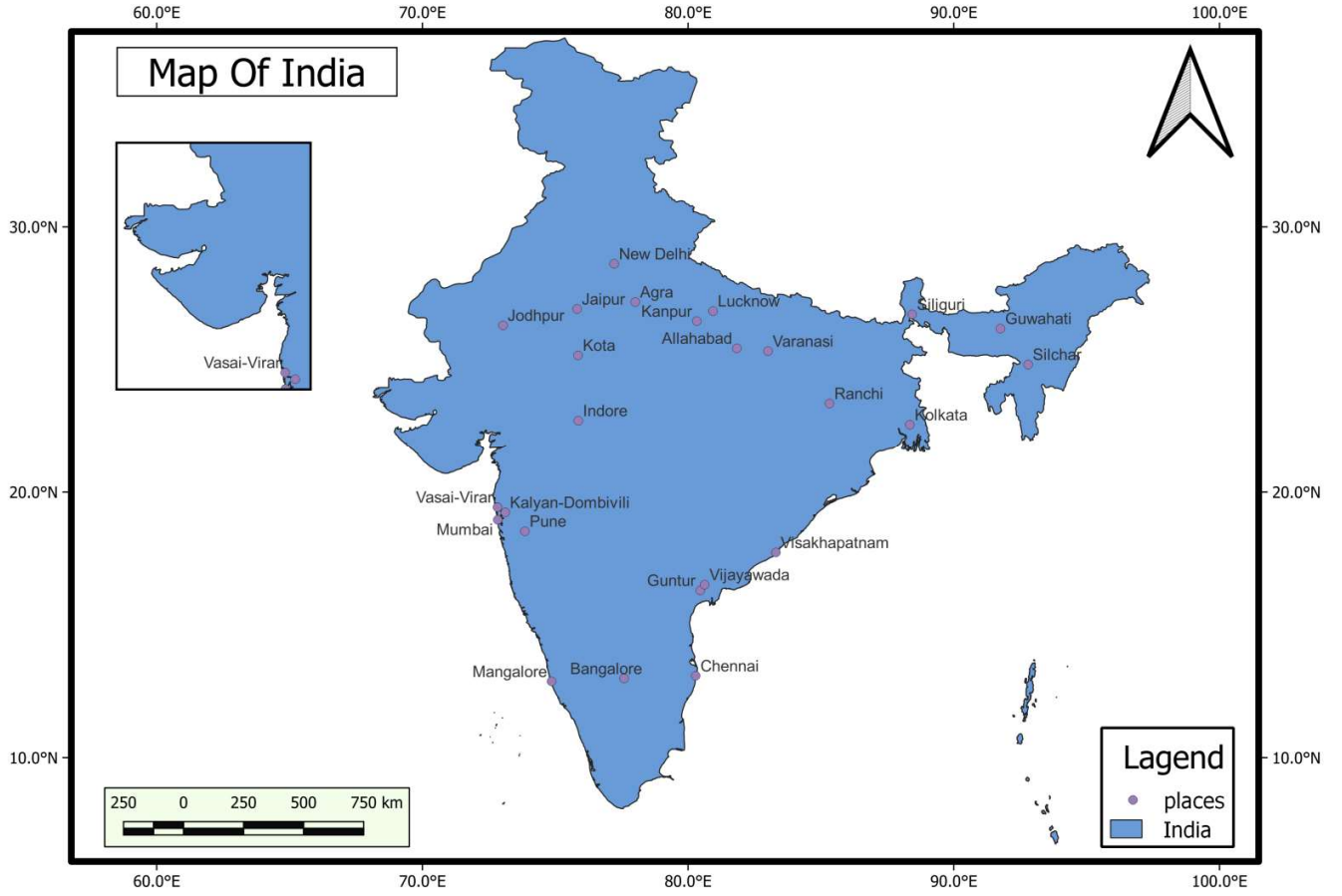




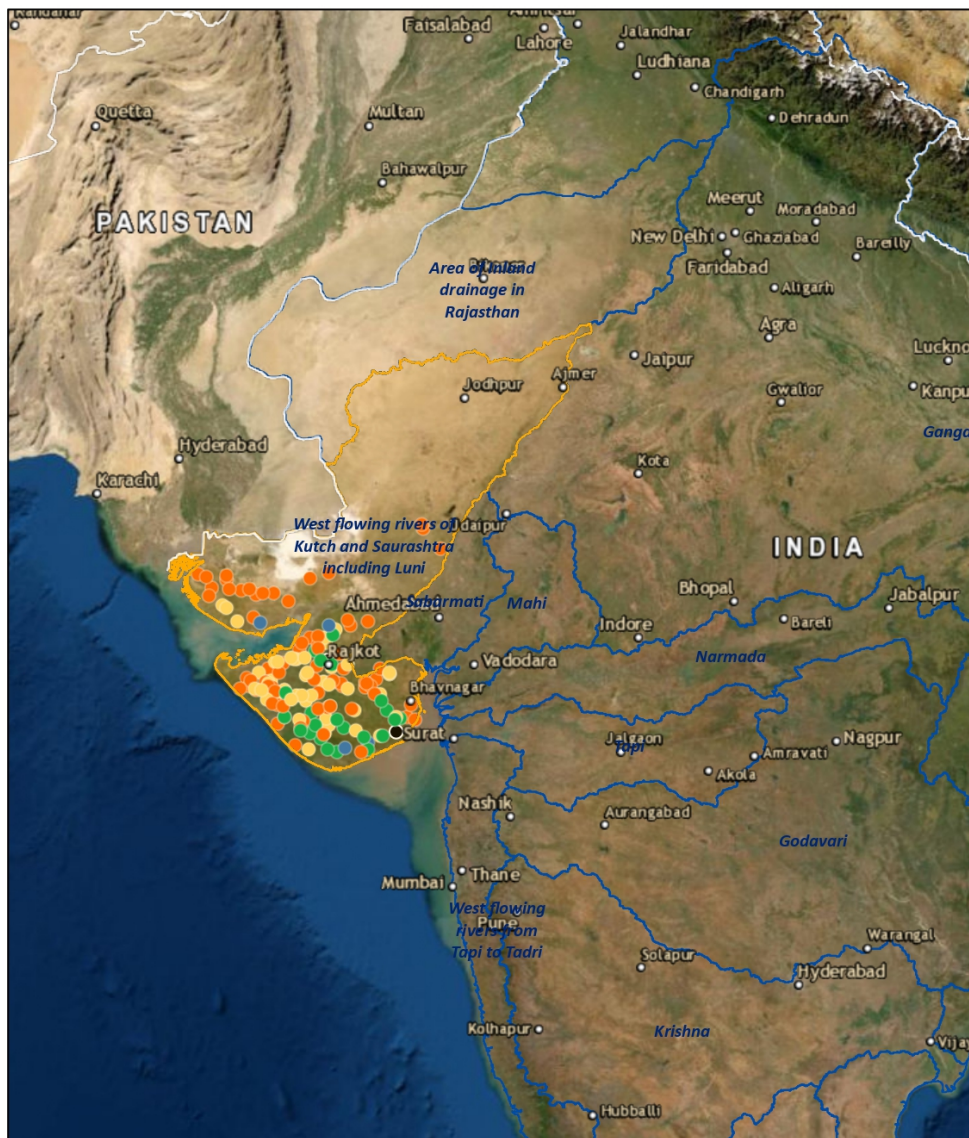
# DEM ANALYSIS



# CREATING A MAP

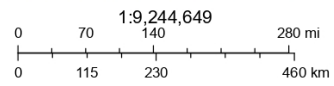


# MAP ANALYSIS/PREPARATION



5/27/2022

- Basin Boundary
- >50 - 70%
- >70 - 90%
- < 50%
- > 90%



Esri, HERE, Garmin, (c) OpenStreetMap contributors, and the GIS user community. Source: Esri, Maxar, Earthstar Geographics, and the GIS User Community